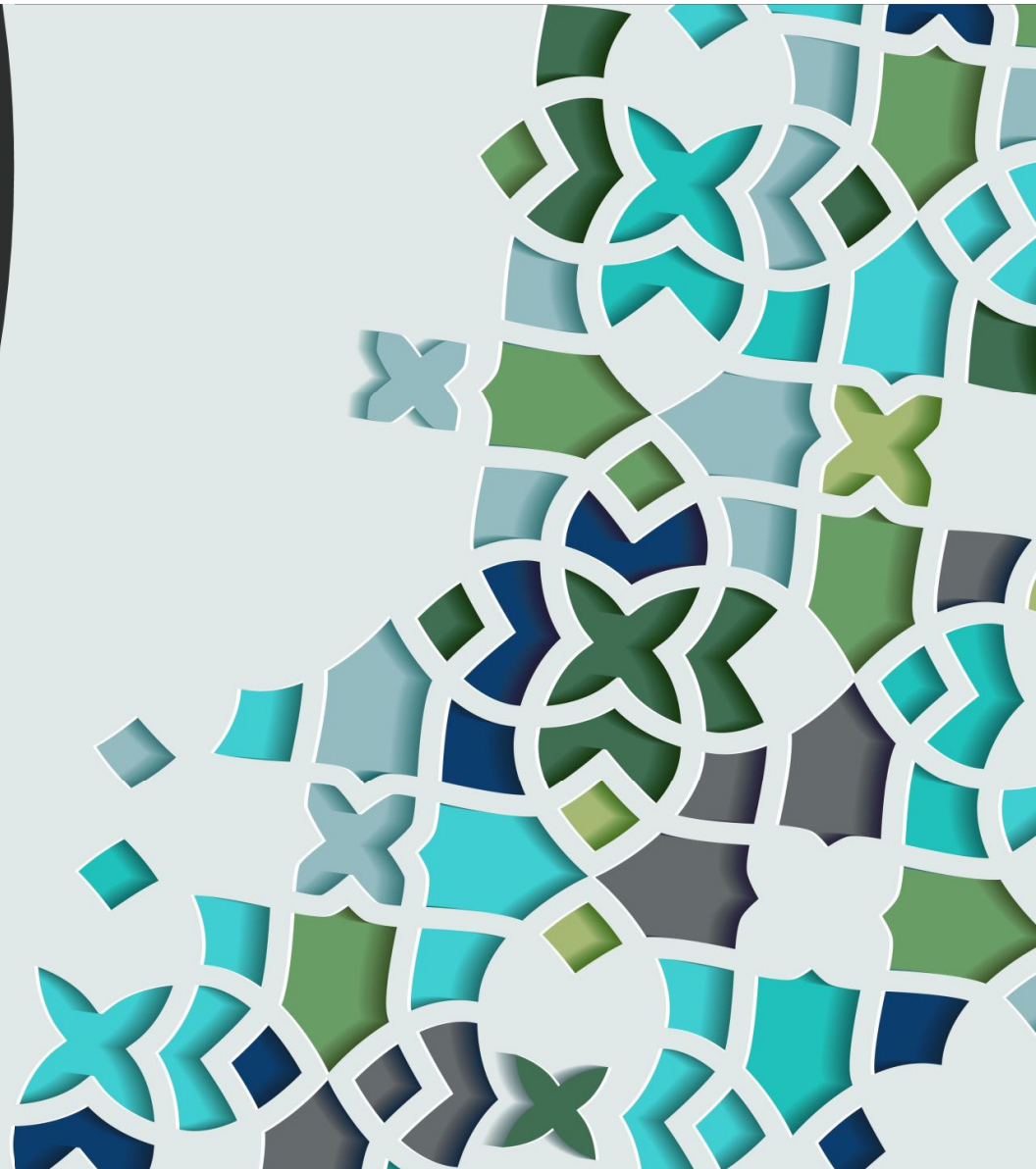


Risk Management for Camps: An Update

2023 КПЗ'їзд
Торонто Канада



Definitions

Required / Вимога (обов'язок)

- **Mandatory action**

- Shall
- Must
- Mandate
- Obligation
- Compulsory
- Essential



Recommended / Порада (побажано)

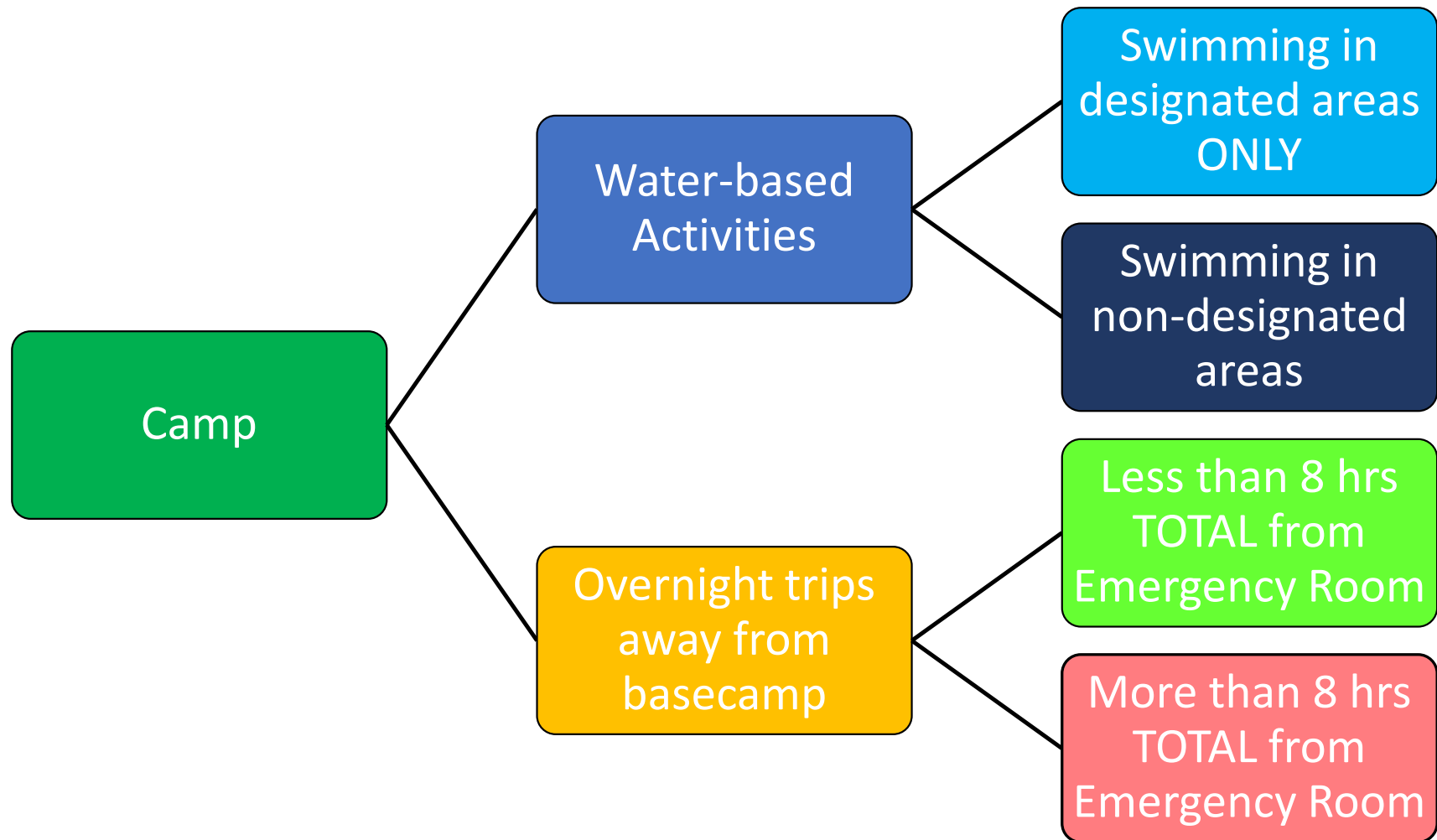
- **Positive suggestion**

- Should
- Might
- Encourage
- Suggest
- Endorse
- Optional





How do we
classify risk?





Overnight trips away from the Main Camp

2/21/2023

©Adventureworks! Associates, Inc.



What matters?

- the group is away from main camp AND independent of its support services
- Maximum remoteness during the trip
- Staff included in ratio must be capable of managing the group alone
 - if it becomes necessary for the group to split up or if the primary leader becomes incapacitated
- Staff must have experience travelling similar distances in similar locations prior to leading the trip

What type of overnight trip is it?



Backcountry

- the group remains close to front country access points with resources for outside assistance
- within 8-hours' travel under their own power to reach an access point where emergency medical services may be obtained

What type of overnight trip is it?

Extended Backcountry

- the trip includes areas where the group is remote from front country access points with resources for outside assistance
- Exceeds 8-hours' travel under their own power to reach an access point where emergency medical services may be obtained



Let's compare ...

Backcountry

- Trip familiarization and pre-trip training is required for staff
 - Recommended for campers
- At least one leader must have a current Standard First Aid/CPR certificate
 - Having two trip leaders with Standard First Aid / CPR is highly recommended
 - Having a trip leader with 16-hour wilderness first aid is recommended
- For trips travelling on water, campers should receive boating instruction prior to departure

Extended Backcountry

- Trip familiarization and pre-trip training is required for staff AND campers
- At least one leader must have a current 16-hour basic wilderness first aid / CPR certificate
- Assistant leader must have at least current Standard First Aid/CPR certificate
 - Having two trip leaders with wilderness first aid is highly recommended
- For trips travelling on water, campers must receive boating instruction prior to departure



Water based Activities

2/21/2023

©Adventureworks! Associates, Inc.

10

Water-based Activities include...





Plast Boating Policies

- every person must wear an approved and correctly sized Personal Floatation Device (PFD) or life jacket at all times
- the supervising leader must hold a current Bronze Cross or Canadian Red Cross Assistant Lifeguard certificate
- campers must receive a minimum of 8 hours training before going downriver where they will encounter rapids

Plast Swimming Policies

Apply to both pools and waterfronts

Apply anytime campers or staff enter the water, outside of boating programs, regardless of water depth

Annual swim test required for campers AND staff

- recorded
- kept on file
- shared with staff





Plast Annual Swim Test Requirements

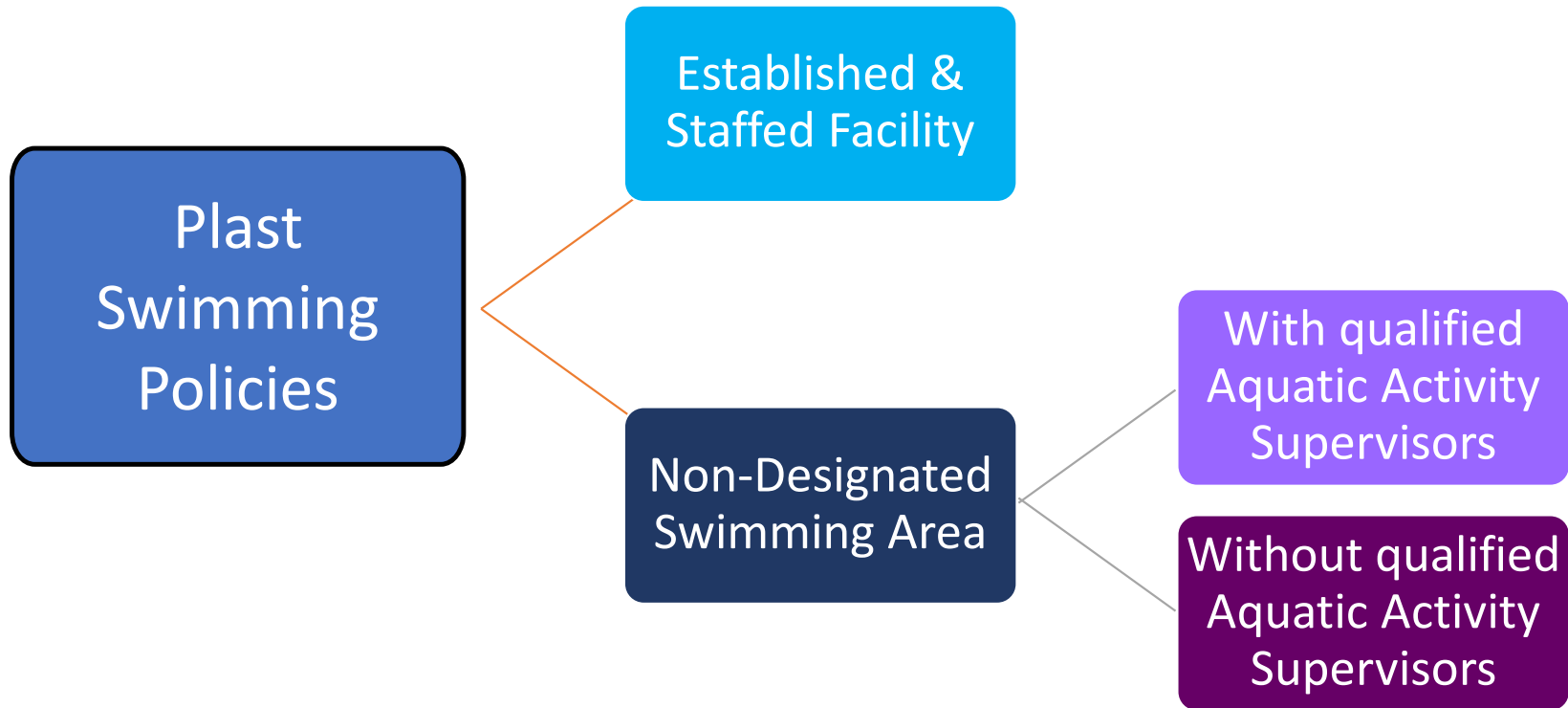
Plast campers **and staff** of any age must, at a designated swimming area or pool, undergo the following swim test in its entirety, in sequence and without any aids or stops:

- Rolling entry into deep water
 - Tread water for 1 minute
 - Swim 50 m continuously, any stroke
- Administered by a Lifesaving Society National Lifeguard OR a certified aquatic instructor
 - Lifesaving Society Instructor Certificate
 - Lifesaving Society Swim Instructor Certificate or
 - Canadian Red Cross Water Safety Instructor Certificate
 - Staff and campers are exempt if they provide proof of Bronze Medallion certification or higher



Plast Annual Swim Test Requirements

- Document swim test results
 - Achieved the standard without a lifejacket
 - Achieved the standard with a lifejacket
 - Practiced (but did not achieve) the standard
- Communicate results to **camp staff and** parents/guardians
- Campers who do not achieve the standard must wear a lifejacket during all water-based activities except when
 - the water level is below mid-calf
 - swimming in a designated swim area
- Camp Director must have hard copy of results for all campers and staff at camp





Swimming at Established & Staffed Facility

- Meets provincial regulations
- Lifeguard qualifications including and not limited to age and certification
 - Minimum regulated ratios of lifeguards
 - Water quality

Campers stay within boundaries for their ability based on results of swim test

- Staff (non-lifeguard) supervision required for
- non-swimmers (staff must be in the water within arm's reach & 1:4 ratio)
 - campers who are on land & NOT swimming



Camp staff must

- evaluate suitability / absence of obvious hazards
- establish boundaries

Minimum rescue equipment includes:

- First aid kit readily available
- buoyant throwing aid attached to 6 mm line at least 15 m long

Must designate Staff Member to be “In-Charge” of swim time

- on land
- NOT engaged in other tasks (e.g. cooking, fire making, etc.)

Non-Designated Swim Areas

Requirements for swimming in NDSAs with qualified Aquatic Activity Supervisors



Swimmers who
- Failed the swim test OR
- Passed the swim test
with a lifejacket
must wear an approved,
properly fitted, personal
flotation device (PFD) or
life-jacket at all times
while in the water



Two (2) people with
current LSS Bronze Cross
must be positioned in
the swim area for a
group of up to 25
swimmers

An additional Bronze Cross
is required for every 25
more swimmers



Aquatic Activity
Supervisors shall be
identified to swimmers
prior to swim time, and
wear suitable attire
("ready to assist /
intervene in the water")
while on duty



All swimmers must have
a "buddy"

Requirements for swimming in NDSAs without qualified Aquatic Activity Supervisors



All swimmers must wear an approved, properly fitted, personal flotation device (PFD) or life-jacket at all times while in the water



At least two staff (age 18+) must be positioned in the swim area to act as Lookouts for a group of up to 16 swimmers

An additional Lookout is required for every 8 more swimmers



Lookouts shall be identified to swimmers prior to swim time, and wear suitable attire (“ready to assist / intervene in the water”) while on duty



All swimmers must have a “buddy”

Additional Recommendations for Non-Designated Swimming Areas



Safeguard

- **Safeguard program** (3.5-4 hr.): safety supervision training for guardians (e.g, day camp counsellors, counsellors-in-training and others) who accompany groups of young people to pools or waterfronts. The course stresses the responsibility undertaken by these group leaders for safeguarding the young people in their care even when under lifeguard supervision.



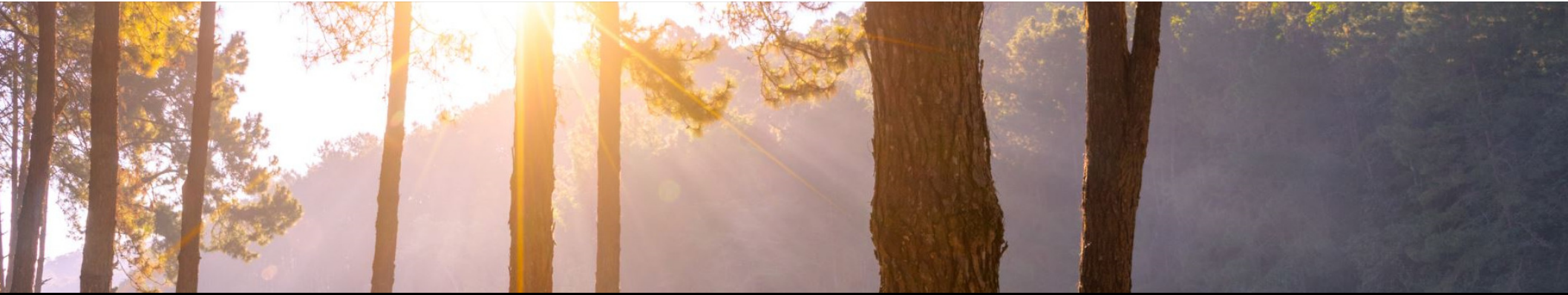


Putting it together...



Program

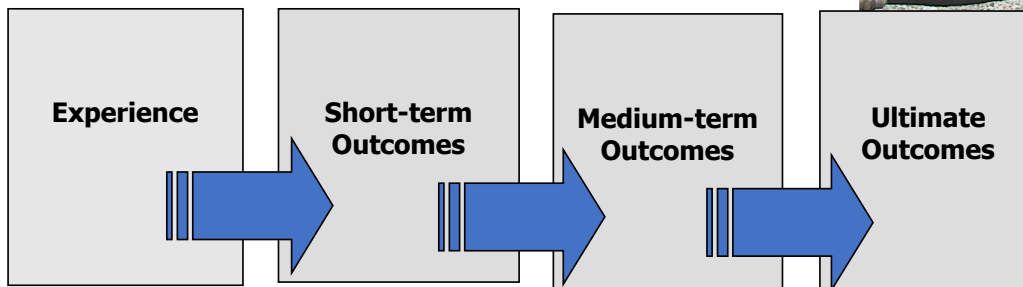
Structured opportunity for
an experience including
one or more activities;
designed and planned



Experience

Forward Design??

- What is the program?
- What are the goals of the program?
- What is the rationale for including this type of experience in achieving those goals?



2/21/2023

26

Problems with Forward Design

©Adventureworks! Associates, Inc.

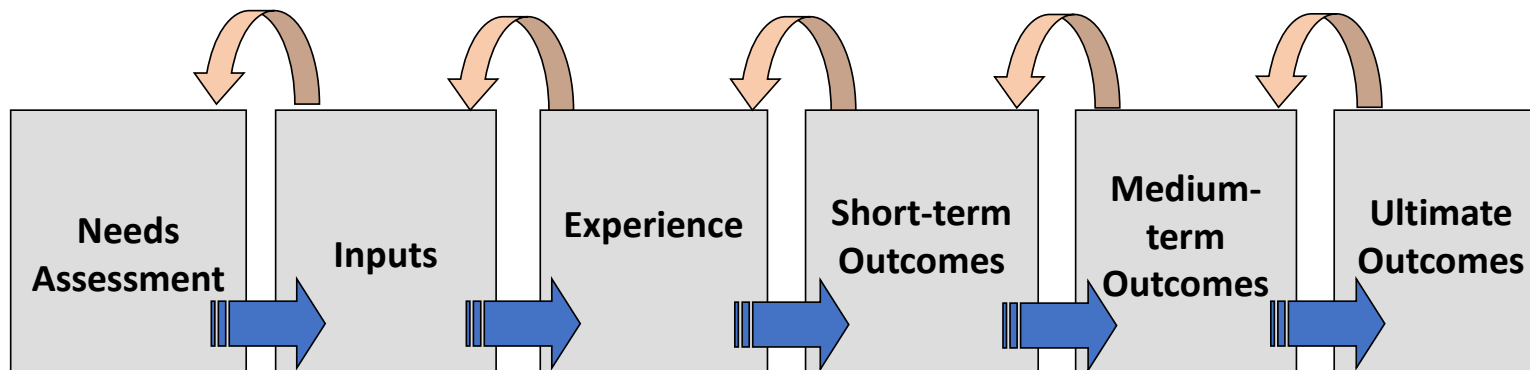


Problems with Forward Design

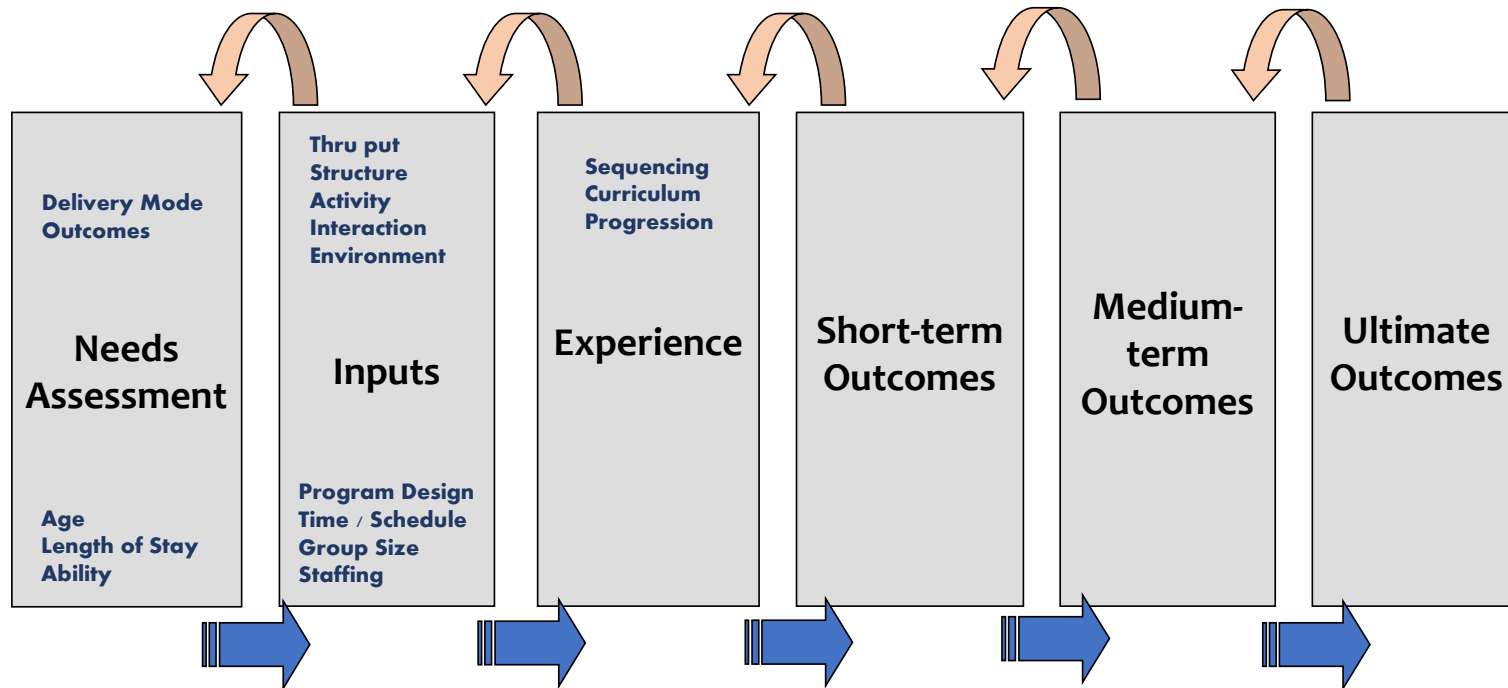
- Experiences are selected first
 - Journey begins without clarifying the destination OR the available resources
- Difficult to adjust to reality
 - Group expectations
 - “sunk costs”

Backward Design

- Consider Ultimate Outcome **1st**
- Think about available resources early in the process
- Provides criteria for making changes during the journey



Attributes



Program design attributes

- a quality or feature regarded as an inherent part of something that determines its properties
 - Physical components or characteristics that make up a program
 - Not the activities themselves directly but about the activities

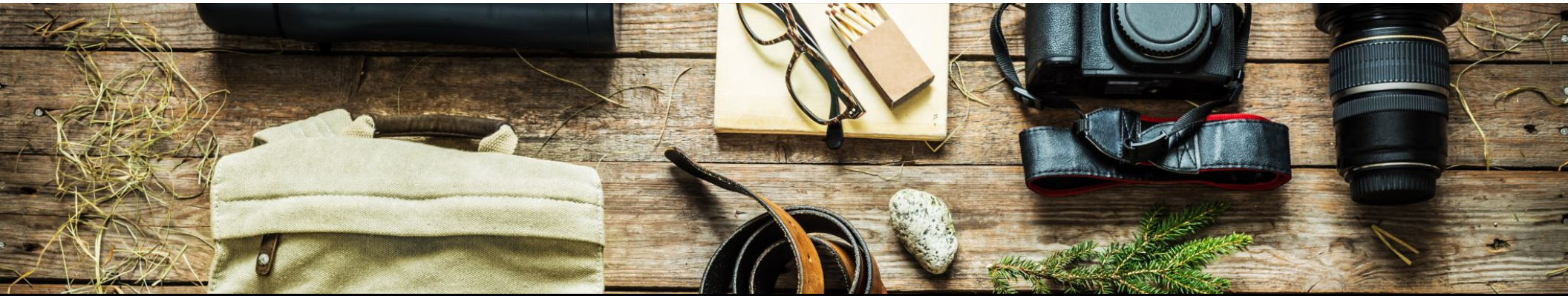
Ingredients – Dish – Meal – Dining Experience

11/26/2020

©Adventureworks! Associates, Inc.



30



Typical Camp Attributes

Typical Camp Attributes

- Campers
 - Number
 - Ages
 - Skill / Experience level
- Staff
 - Number
 - Age
 - Gender split
 - Skill / Experience level
- Familiarity of campers with staff
- Number of days available
 - For camp
 - For staff training
 - For camp planning
- Camp location
 - Remoteness
 - Familiarity
 - Amenities
- Available budget
- Gear
 - Campers
 - Staff
 - Group
 - Emergency / Rescue
- Additional resources
 - Specialists
 - Guides
 - Outfitters

Contact Information

Катруся Гарас

- kathy@adventureworks.org

